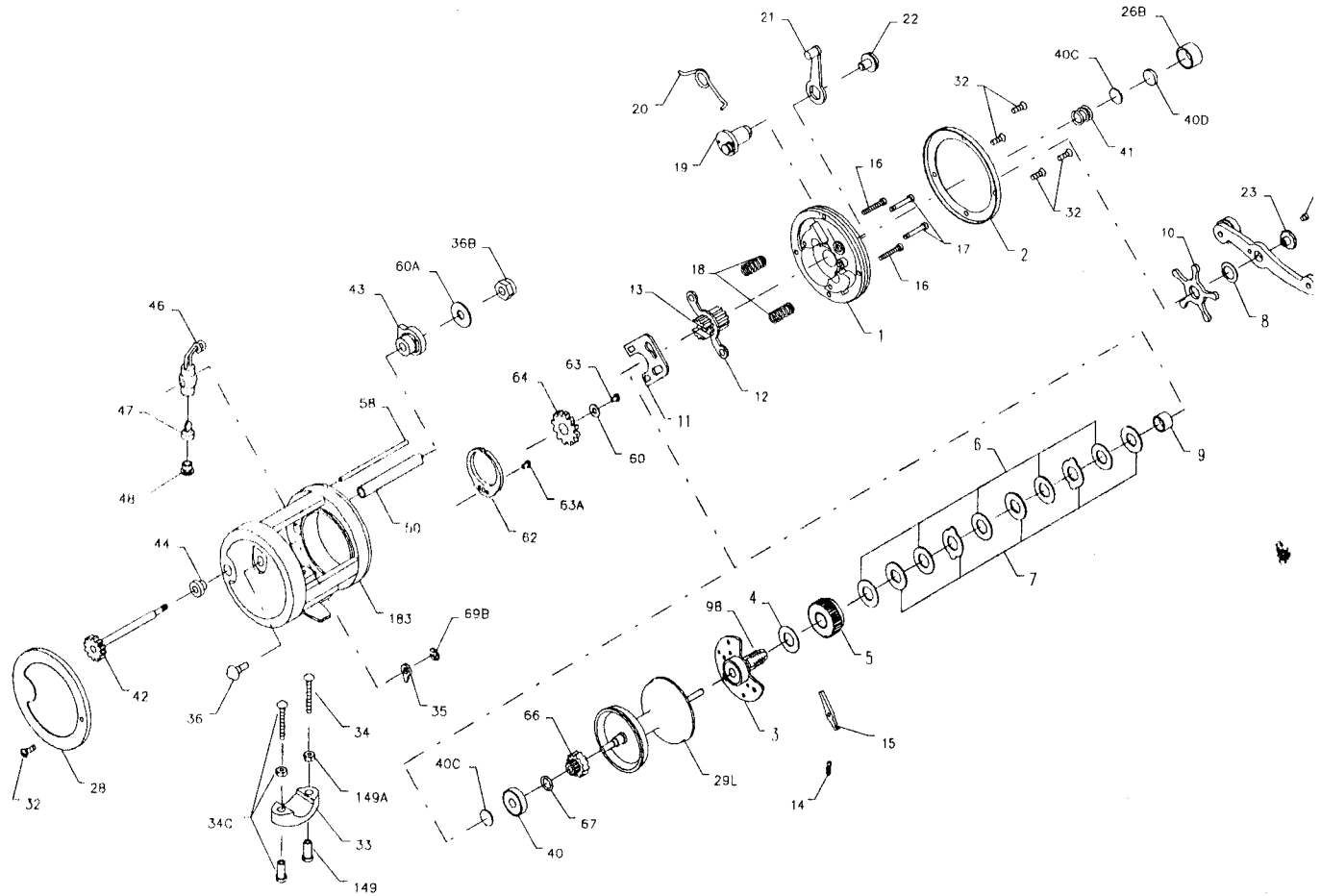




PARTS AND PRICE LIST FOR MODEL 320GTI



Key No.	Part No.	Description	Price	Key No.	Part No.	Description	Price
1	001 320	Right Side Plate	\$5.25	34	034 045	Clamp Screw Only	\$1.00
2	002 320	Right Side Ring	5.65	34C	034C045	Clamp Screw w/Nuts	2.50
3	003 320	Bridge Assembly	18.00	35	035 320	Click Tongue	1.25
4	004 349	Fiber Washer	.45	36	036 320	Click Button	1.10
5	005N320	Main Gear	6.90	36B	036 700	Worm Shaft Nut	.90
6	006 320	Friction Drag Washer (5 req.)	1.10	40	040 320	Ball Bearing	7.50
7	007C113H	Metal Drag Washer (Set of 5)	4.40	40C	040C320	Metal Thrust Washer (2 req.)	.40
8	008 349	Tension Spring	.90	40D	040D320	Rubber Thrust Washer	.40
9	009 320	Spacing Sleeve	1.90	41	041 330	Right Side Thrust Spring	.45
10	010 349	Star Drag	4.40	42	042 320N	Worm	5.00
11	011 320	Eccentric Jack	1.25	43	043 330	Right Side Worm Bearing	1.05
12	012 155	Pinion Yoko	.90	44	044 330	Left Side Worm Bearing	1.05
13	013N320	Pinion Gear	3.55	46	046 320N	Line Guide Carriage	4.45
14	014 330	Dog Spring	.50	47	047 320	Pawl	1.35
15	015 320	Dog	1.00	48	048 330N	Pawl Cover Screw	.95
16	016 113H	Lower Bridge Screw (2 req.)	.50	50	050N320	Worm Shield	1.90
17	017 113H	Upper Bridge Screw (2 req.)	.50	58	058 320	Line Guide Post	1.70
18	018 060	Clutch Spring (2 req.)	.45	60	060 320	Idler Gear Washer	.40
19	019 320	Eccentric Cam	2.00	60A	060 320	Worm Nut Washer	.40
20	020 155	Eccentric Spring	.45	62	062 209	Click Spring	1.50
21	021 285	Eccentric Lever Assembly	1.60	63	063 500S	Idler Gear Screw	.80
22	022 060CH	Eccentric Screw	.55	63A	063 330	Click Spring Screw	.50
23	023 114	Handle Assembly Screw	2.65	64	064 320	Idler Gear	1.30
23A	110 060	Handle Lock Screw	.45	66	066 320	Spool Gear Click Ratchet	1.60
24	024 320	Handle Assembly	8.50	67	067 009	Spool Gear Lock Ring	.40
26B	026B320	Spool Tension Control Cap	1.75	69B	069B600	Retaining Ring (Click Button)	.90
28	028 320	Left Side Ring	5.95	98	098 320	Gear Sleeve	5.00
29L	029L320	Aluminum Spool	14.70	149	149 045	Clamp Nut Only	1.00
32	032 017	Side Plate Screw (5 req.)	.40	149A	149 200	Hex Nut Only	.50
33	033 113	Rod Clamp	4.00	183	183 320	Frame	25.70
	*033R200	Ringed Rod Clamp (Optional)	6.25				